

Device Errata

NL-SWDK2

NimbeLink Corp

Updated: September 2021



© NimbeLink Corp. 2021. All rights reserved.

NimbeLink Corp. provides this document in support of its products for the internal use of its current and prospective customers. The distribution of this document, and the information it contains, does not create any right or license in any party to use the information. Modification or redistribution of this document is prohibited.

Products referenced in this document may be modified or discontinued at any time. All NimbeLink products are sold subject to agreed upon terms and conditions. If no written agreement exists, all NimbeLink products are sold subject to NimbeLink's then current Terms and Conditions.

While efforts are made to ensure accuracy, typographical and other errors may exist in this document. This document, and the information it contains, is provided without warranty of any kind, including but not limited to implied warranties of merchantability, fitness for a particular purpose and non-infringement.

By accepting this document, you agree to the foregoing, as well as agree that NimbeLink shall have no liability for damages of any kind based on your use of this document, or the information it contains, including but not limited to any direct, indirect, special, or consequential damages.

Skywire and NimbeLink are registered trademarks of NimbeLink Corp. All other trademarks appearing in the document are the property of their respective owners.

Table of Contents

Table of Contents	2
Applies to NimbeLink Part Numbers	3
Overview of Error	3
How to Identify Affected Devices	3
Details of Error	5
Contact	5
Version Information	6

1. Applies to NimbeLink Part Numbers

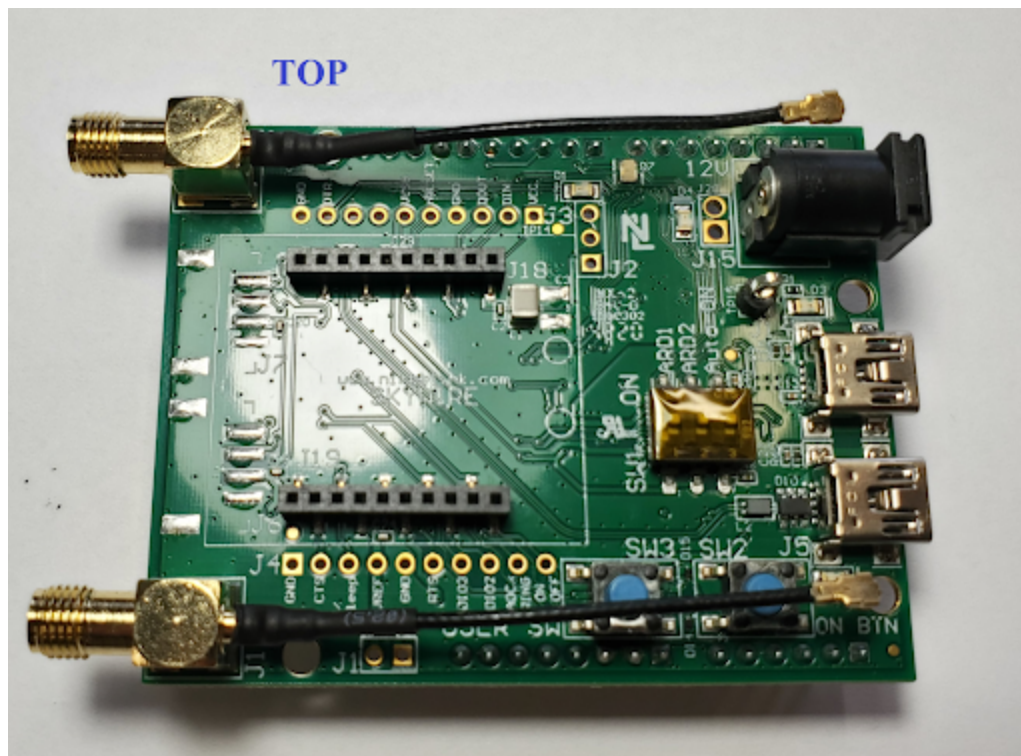
Affected Part Numbers	Description
NL-SWDK2	Skywire Development Kit 2

2. Overview of Error

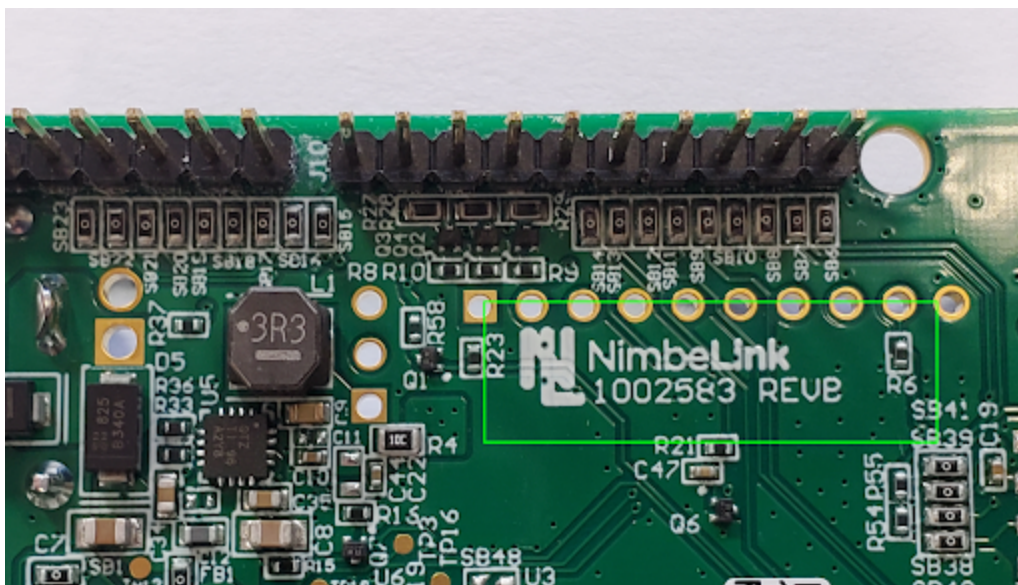
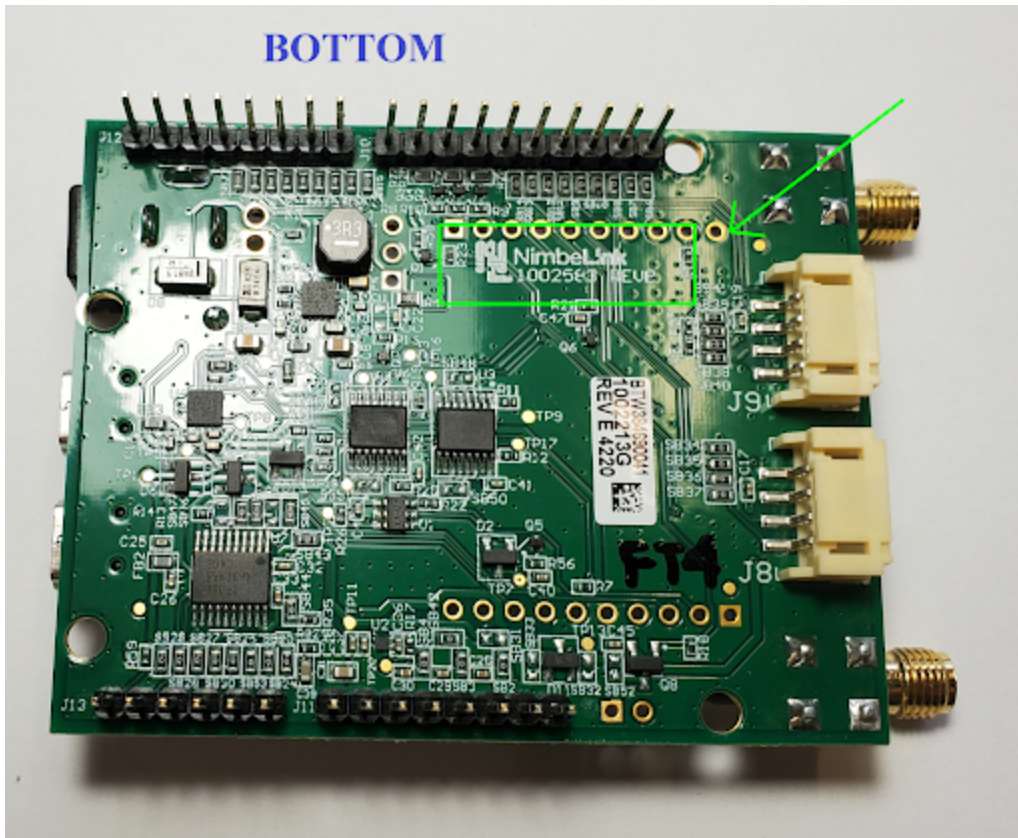
This Errata affects the NL-SWDK2 on the J3 through-hole header. The silkscreen labels for DOUT and DIN are swapped. DOUT should be DIN and vice versa. **Please note:** The electrical copper connections are still correct and the board is fully functional. Only the silkscreen is incorrect.

3. How to Identify Affected Devices

Affected devices can be identified by checking their part number on the devices PCB Silkscreen. All devices with part numbers 1002583 are affected. Check the bottom of the PCB to locate your assembly and revision number.



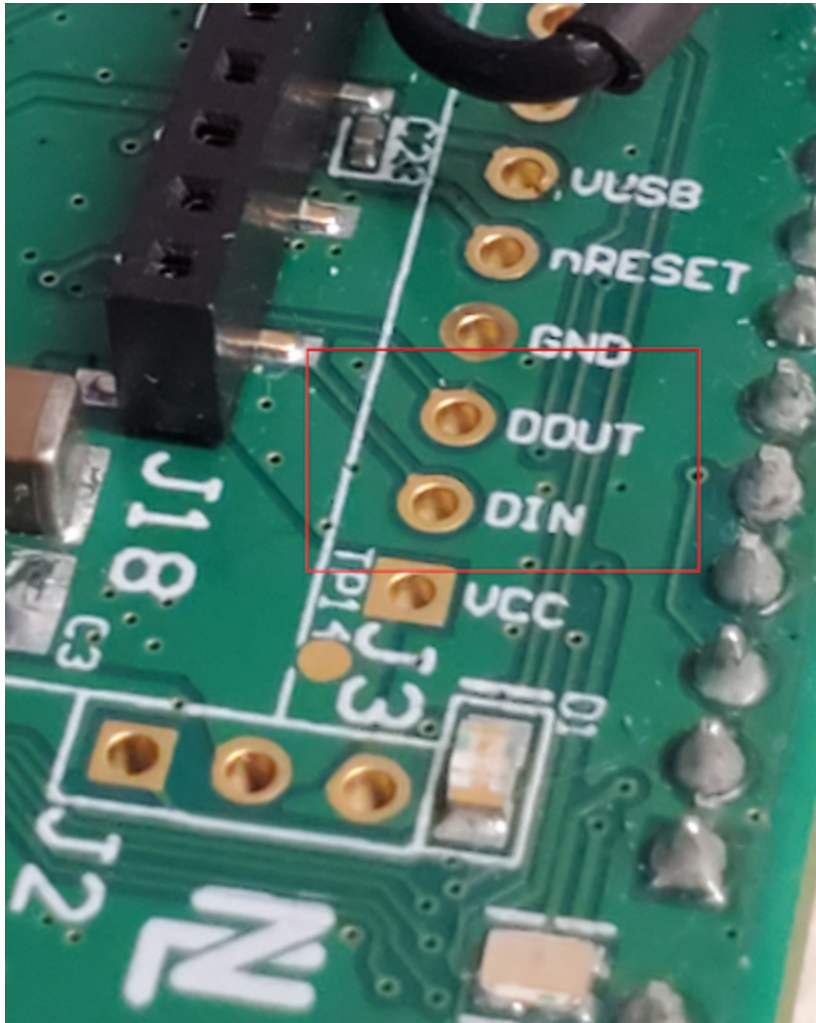
BOTTOM



The assembly number is shown in the image above, inside of the green box.

4. Details of Error

The silkscreen labels for DOUT and DIN are swapped on the J3 connector. DOUT should be DIN and vice versa.



Please refer to the SWDK2 schematic for the correct pinout of the J3 header

5. Contact

For further information please contact NimbeLink Technical Support:
product.support@nimbelink.com.

6. Version Information

Version	Notes	Date
A	- Initial Release	09/02/2021