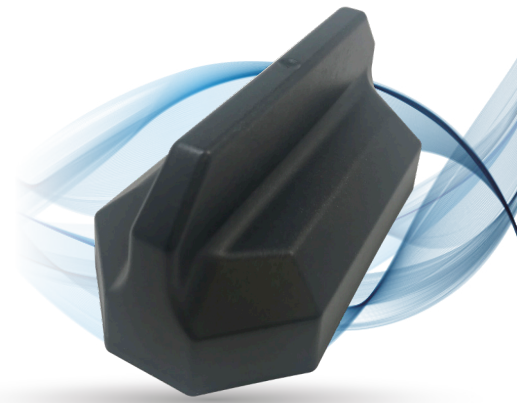


M2MAX[®] W

Dual Band Wi-Fi IP67 Antenna designed for GETAC

M2MAX W is a fully rugged outdoor antenna designed specifically for GETAC laptops and tablets. This antenna provides best in class performance with a high gain dual band Wi-Fi antenna inside a single robust and compact housing.

- 1 x 2.4 & 4.9-6 GHz Wi-Fi Element
- Lower profile and smaller footprint than competing solutions
- Must be mounted on metal
- Available in black or white
- US Patent 10109918



Full Outdoor
Installation Ready



Compact and Robust
UV Resistant Housing



Flexible Mounting
Options



Customizable Cables
and Connectors to
Connect to Any Modem



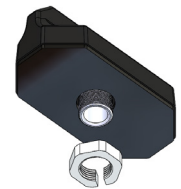
Low loss cable
accessories



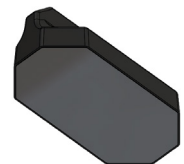
Fast custom
turnaround time

Descriptions/Applications

The M2MAX W antenna builds on the best in class RF performance, leading design, features, and extended product life tradition of this highly successful product line. Ideal for warehouse and yard management, this antenna has been designed to mount externally to facility assets utilizing a Getac laptop or tablet docking station.



Bolt Mount



Magnetic Mount

Standard Configurations

AP-GTC-M2M2-W-Q-BL-10	Wi-Fi, Threaded bolt mount, SMA connector, Black, 10ft coax
AP-GTC-M2M2-W-M-BL-10	Wi-Fi, Magnetic mount, SMA connector, Black, 10ft coax

Also available in color white, customizable cable lengths up to 35 feet, and other connector variations.

Electrical Data

Frequency Range	2.4/4.9-6.0 GHz	
Operational Bands	Wi-Fi	
Peak Gain: Isotropic	2.4 GHz, 5.5 GHz	6.5 dBi, 4.2 dBi

Environmental Data

Hazardous Substances	RoHS Compliant
Temperature	-40°C to 65°C (-40°F to + 149°F) Operating and Storage conformance to IEC 60068
Humidity (Non-Condensing)	5% to 96% Operating and Storage conformance to IEC 60068
Water Ingress	IP67
Military Spec	MIL-STD 810 conformance to vibration
Housing Material	Glass-filled Polypropylene (Analene)

Mounting Data

Dimensions	Height	2.19" (55.5mm)
	Width	2.56" (65mm)
	Length	4.84" (122.9mm)
Color	Black (BL) or White (WH)	

Cable Data

Wi-Fi	Type	CFD195 Low Loss
	Diameter	0.195" (4.953 mm)
	Length	1 feet (0.3 m)
	Termination	SMA Male