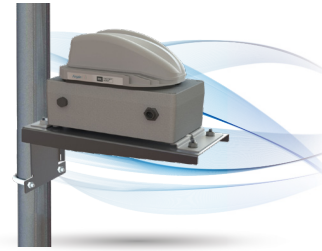


# AIRGAINCONNECT® AC-HPUE-FWA

Fixed Wireless Access Multi-Band High Power LTE Antenna-Modem



The AirgainConnect FirstNet Ready™ AC-HPUE-FWA fixed wireless HPUE antenna-modem is ideal for mounting on a pole, on a wall, or for use in a rapid deployment kit. It comes pre-assembled with a ventilated IP67 enclosure and includes the following:

- Antenna-modem attached to a water-tight housing with the Ethernet Injector inside
- Industrial grade FirstNet SIM card installed
- Wall-mount AC power adapter
- Mounting bracket with clamps for attaching to a pole or to a wall
- Water-tight seal for power cable
- Water-tight seal for ethernet cable
- 10 meter standard power cable length, custom lengths are available

The AC-HPUE-FWA high power user equipment (HPUE) built for FirstNet® MegaRange™, delivers the maximum allowed radiated power directly to the LTE antenna elements. The uplink signal is the weakest link in the LTE connection, which can be problematic in fringe coverage areas. When the uplink is disconnected, the user gets no service in the downlink.

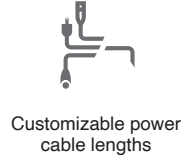
AirgainConnect's patented technology eliminates the loss over the coax cables from the router to the antenna, up to providing up to 10 times the transmit power when compared to a router and conventional modem. The result is greater coverage range, deeper building penetration and higher data throughput speeds at the edge of the network on all bands.

AC-HPUE-FWA provides two high gain multi-band LTE antennas and one band 14 LTE antenna powered by an HPUE LTE modem. AC-HPUE attaches to the router WAN port via Ethernet data cable.

## Applications

AC-HPUE-FWA is ideal for:

- Public and private utility sites
- Police departments
- Fire departments
- EMS dispatch centers
- Government buildings
- Airline emergency operations centers
- Hospitals
- Private medical practices
- Schools
- Private Security locations
- Media outlets
- Rapid deployment kits



## Standard Configurations

<b>AC-HPUE-FWA-BUND</b>	AC-HPUE (LTE only) for fixed wireless application. Includes NEMA enclosure, pole mount bracket with clamps, and Ethernet injector
-------------------------	---

## Power Cable

Must purchase a power cable with FWA

<b>AC-FWA-ACPWR-10M</b>	10 meter power cable with AC power adapter
-------------------------	--

## Electrical Data

Power: 24VDC

## LTE Modem

Cat 12, 3GPP Release 12+

Band 14 output power: 1.25W (Class 1) Element 1

Bands 2, 4, 5, 12, 17, 29, 30, 66 output power: 200mW (Class 3) Elements 2 & 3

MIMO: 1 x 2

Transmit bandwidth: 1.4 MHz through 20 MHz

WCDMA capabilities on bands 2, 4, 5

## Mounting Data

Dimensions	Height	3.27" (83.1 mm)
	Width	5.79" (147.0 mm)
	Length	7.95" (201.9 mm)
Weight	1.7lbs (771g)	
Mount	Bracket Mount	
Color	White (WH)	

## SIM Card

3FF Micro SIM card support

## Environmental Data

Operating Temperature	-30°C to +70°C
Extended Operating Temperature	+70°C to +80°C
Dust & Waterproof Rooftop Housing	IP67
Vibration	MIL-STD-810G
Shock	IEC 60068-2-27-2008
Temperature & Humidity	IEC 60068-2-30-2008
Solar Loading	IEC 60068-2-5