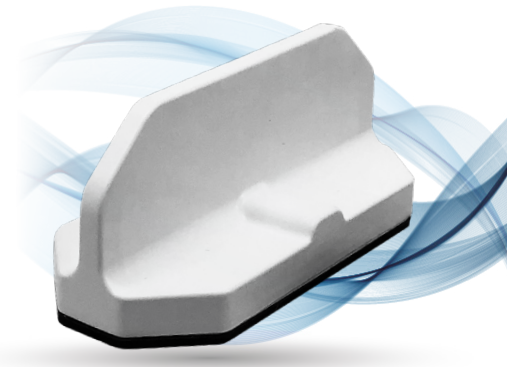



Wi-Fi Antenna for Panasonic (AP-PAN W)


AP-PAN W is a fully rugged outdoor antenna designed specifically to provide high performance Wi-Fi connectivity for Panasonic Body Camera solution. This antenna provides a high gain Wi-Fi antenna inside a single robust and compact housing.

- Dual band 2.4 & 4.9-6 GHz Wi-Fi Element
- Lower profile and smaller footprint than competing solutions
- High gain provides bigger Wi-Fi footprint
- Must be mounted on metal
- Available in black or white
- US Patent 10109918







Full Outdoor Installation Ready




Compact and Robust UV Resistant Housing




Flexible Mounting Options



Customizable Cables and Connectors to Connect to Any Modem



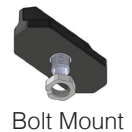
Low loss cable accessories



Fast custom turnaround time

Descriptions/Applications

The AP-PAN W antenna builds on the best in class RF performance, leading design, features, and extended product life tradition of this highly successful Fleet and Public Safety Antenna products. Like all our antennas, this product has been designed to be robust to withstand the natural hazards a vehicle faces including vibration, hot, cold, ice, salt, dirt, car washes, and tree branch sweeps. Our antennas typically outlast the life of a vehicle.



Standard Configurations

Airgain: AP-PAN-W-Q-S2-RP-RA-BL-15 Panasonic: ARB-BWCBLANT-BLB	Threaded Bolt Mount, Black, 15ft coax with reverse polarity, right angle SMA connector
Airgain: AP-PAN-W-Q-S2-RP-RA-WH-15 Panasonic: ARB-BWCBLANT-WHB	Threaded Bolt Mount, White, 15ft coax with reverse polarity, right angle SMA connector

Also available in color white.

Electrical Data

Frequency Range	Element 1		2.4/4.9-6.0 GHz
Operational Bands	Element 1		Wi-Fi
	Element 1	2.4 GHz, 5.5 GHz	7 dBi, 5 dBi

Environmental Data

Hazardous Substances	RoHS Compliant
Temperature	-40°C to 65°C (-40°F to + 149°F) Operating and Storage conformance to IEC 60068
Humidity (Non-Condensing)	5% to 96% Operating and Storage conformance to IEC 60068
Military Spec	MIL-STD 810 conformance to vibration and humidity

Mounting Data

Dimensions	Height	2.15" (54.6mm)
	Width	2.27" (57.7mm)
	Length	5.02" (127.5mm)
Color	Black (BL) or White (WH)	

Cable Data

Wi-Fi	Type	CFD195 Low Loss
	Diameter	0.195" (4.953 mm)
	Length	1 feet
	Termination	RP-SMA Male