

# Firmware Update Procedure for NL-SW-LTE-QBG96

NimbeLink Corp

Updated: August 2019



© NimbeLink Corp. 2019. All rights reserved.

NimbeLink Corp. provides this documentation in support of its products for the internal use of its current and prospective customers. The publication of this document does not create any other right or license in any party to use any content contained in or referred to in this document and any modification or redistribution of this document is not permitted.

While efforts are made to ensure accuracy, typographical and other errors may exist in this document. NimbeLink reserves the right to modify or discontinue its products and to modify this and any other product documentation at any time.

All NimbeLink products are sold subject to its published Terms and Conditions, subject to any separate terms agreed with its customers. No warranty of any type is extended by publication of this documentation, including, but not limited to, implied warranties of merchantability, fitness for a particular purpose and non-infringement.

NimbeLink is a registered trademark, and Skywire is a registered trademark, of NimbeLink Corp. All trademarks, service marks and similar designations referenced in this document are the property of their respective owners.

# Table of Contents

<b>Introduction</b>	<b>3</b>
<b>Windows Firmware Update Procedure</b>	<b>3</b>
Install USB device drivers	3
Plug Modem into Development kit	3
Connect USB and Apply Power	4
Recognize Modem	4
Run Update Application	5
Load Firmware Files	5
Configure COMs	5
Load Firmware	6
Check New Firmware Version	6

# 1. Introduction

As cellular carriers and chipset providers update the network and products that support it, new features get added that are desirable to enable in NimbeLink modems. This document provides instructions on how to update the NL-SW-LTE-QBG96 modem to newer firmware over the USB interface.

Firmware update tools and firmware files are available by contacting NimbeLink's product support team at [product.support@nimbelink.com](mailto:product.support@nimbelink.com).

## 2. Windows Firmware Update Procedure

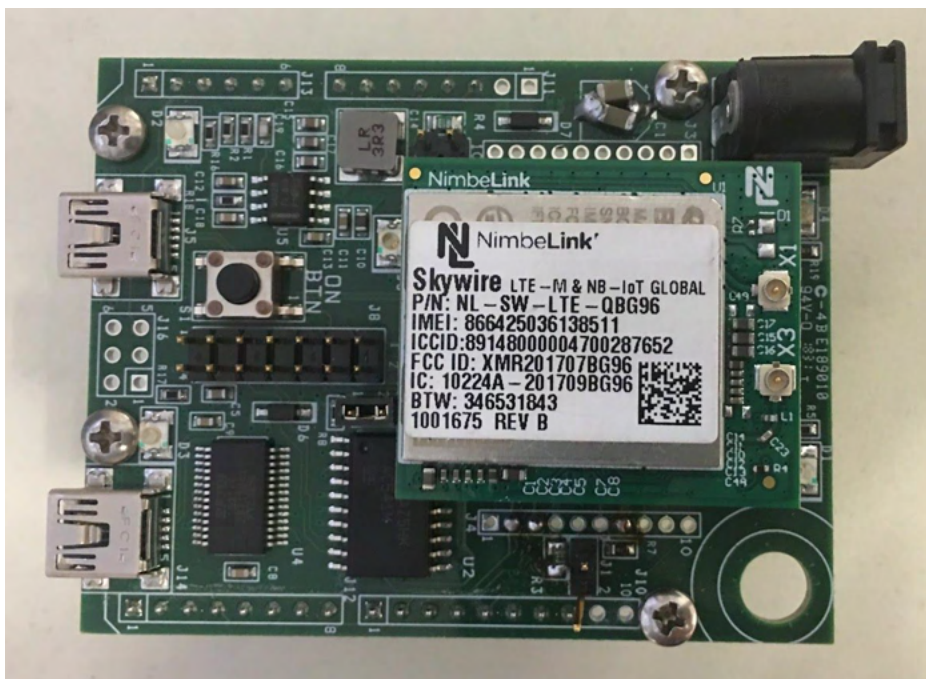
This walkthrough is tested using Windows 10.

### 2.1 Install USB device drivers

Firmware drivers for the NL-SW-LTE-QBG96 are available here: [https://www.quectel.com/UploadImage/Download/Quectel\\_LTE\\_Windows\\_USB\\_Driver\\_V2.0.zip](https://www.quectel.com/UploadImage/Download/Quectel_LTE_Windows_USB_Driver_V2.0.zip)

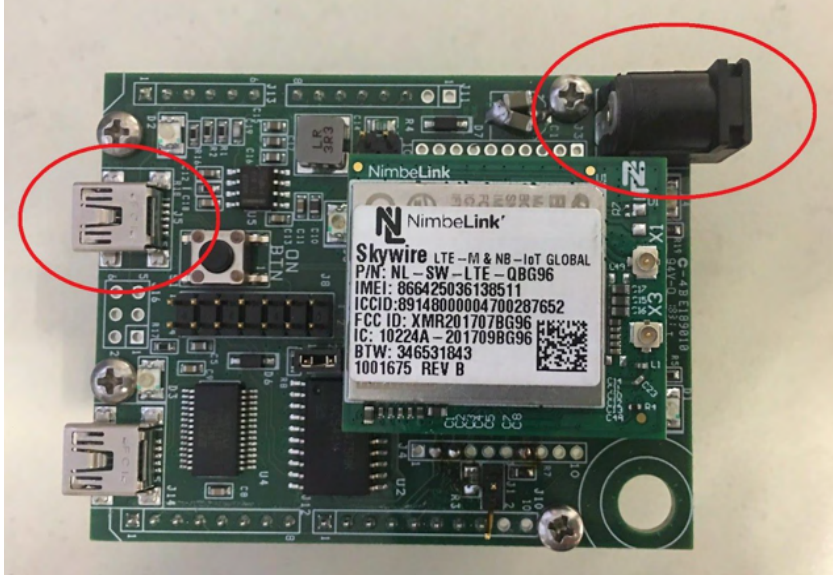
### 2.2 Plug Modem into Development kit

Insert the modem in to the development kit.



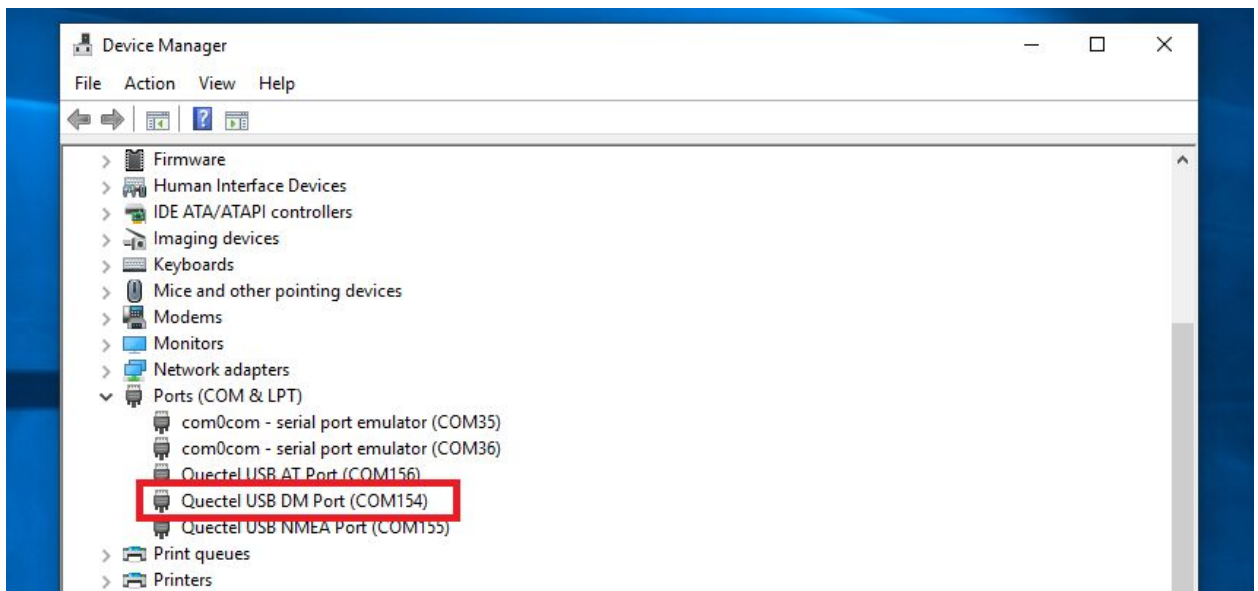
## 2.3 Connect USB and Apply Power

Connect the USB cable to USB connector J5 and the PC. Next, plug in the power supply into connector/barrel jack J3 and turn on the modem by pressing the ON\_BTN.



## 2.4 Recognize Modem

After turning the modem on, the modem takes 5-10 seconds before the USB ports are initialized and recognized by the operating system. Using device manager, note the COM port of the "Quectel USB DM Port" device for later.

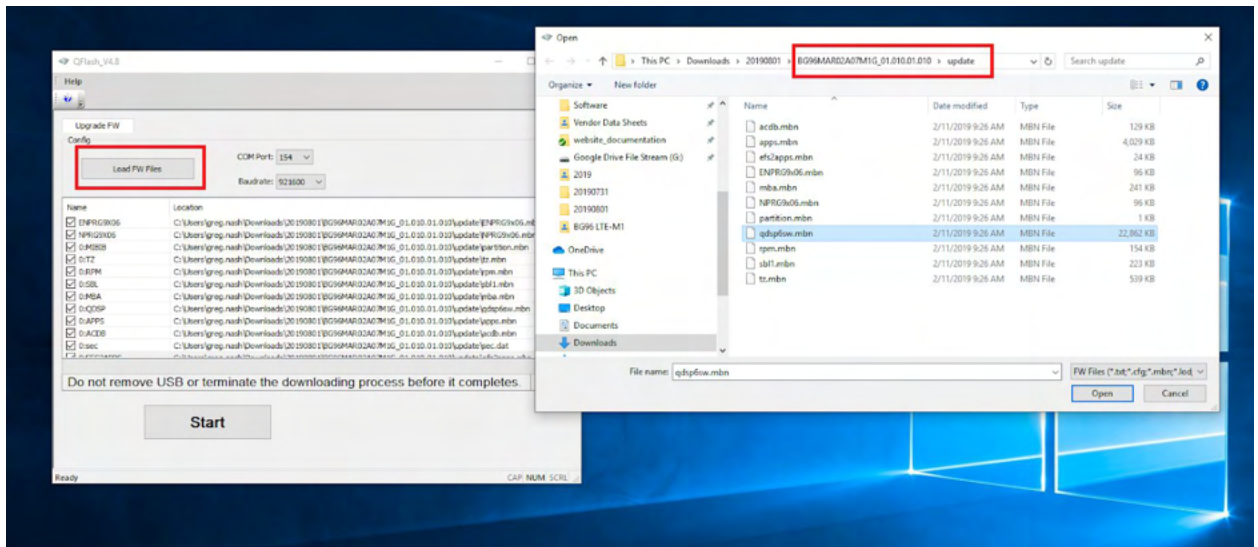


## 2.5 Run Update Application

Extract the QFLASH\_V4.8.zip file and run the QFlash\_V4.8.exe application inside of the QFLASH\_V4.8.zip folder.

## 2.6 Load Firmware Files

Click the " Load FW Files" button inside of the QFLASH tool then navigate to "update" folder inside of the firmware package.

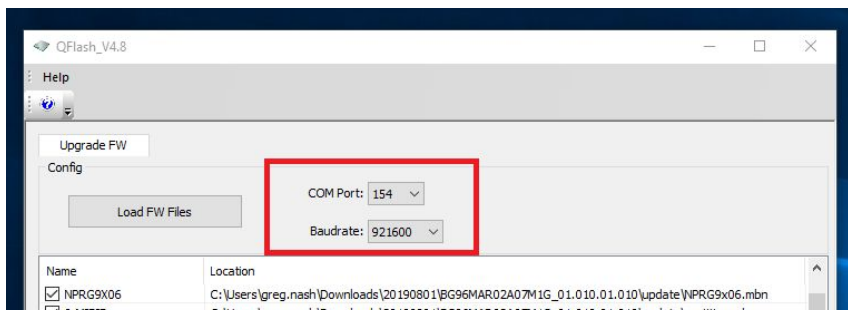


Select any of the files in the folder and the tool will add the appropriate files.

## 2.7 Configure COMs

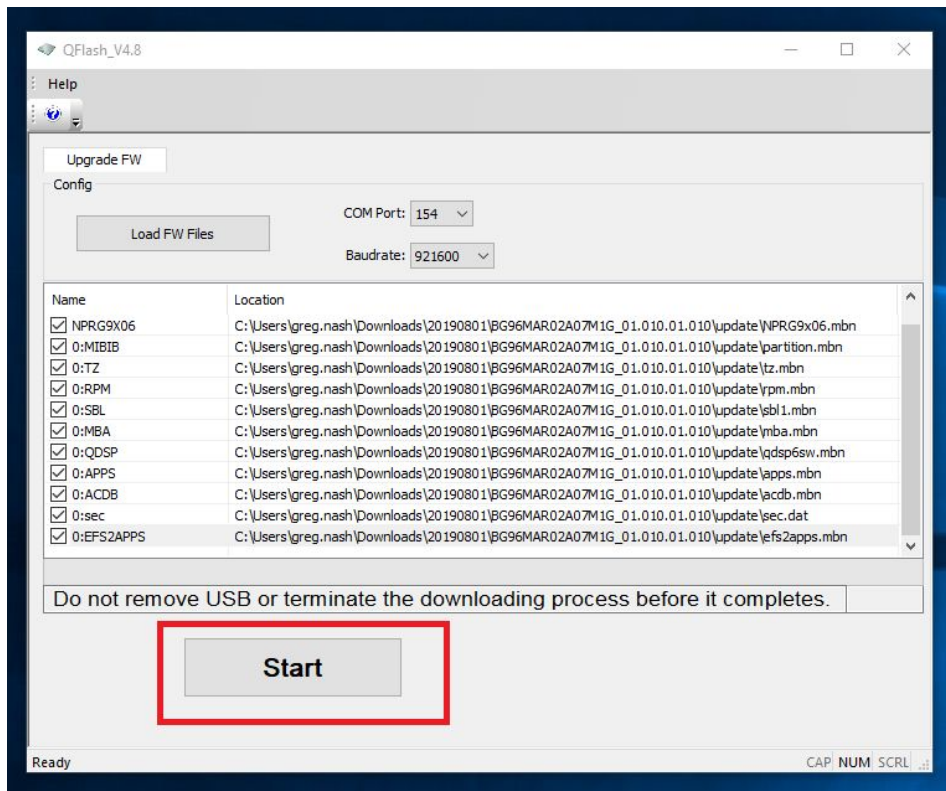
Select the com port of the DM loader noted in section 2.3.

Set the Baudrate to 921600.



## 2.8 Load Firmware

Click the Start button to begin the firmware upload. This process will typically take around 2 minutes.



## 2.9 Check New Firmware Version

If you want to confirm the new firmware version is running on the device, you can issue the command to one of the modems AT command ports:

**AT+QGMR**

Response:

**BG96MAR02A07M1G\_01.010.01.010**

**OK**

Note: The FW version that is output from this command will vary with the FW version that is used for the FW update.