

Device Errata

Skywire[®] Raspberry Pi Adapter

NimbeLink Corp

Updated: July 2017



© NimbeLink Corp. 2017. All rights reserved.

NimbeLink Corp. provides this documentation in support of its products for the internal use of its current and prospective customers. The publication of this document does not create any other right or license in any party to use any content contained in or referred to in this document and any modification or redistribution of this document is not permitted.

While efforts are made to ensure accuracy, typographical and other errors may exist in this document. NimbeLink reserves the right to modify or discontinue its products and to modify this and any other product documentation at any time.

All NimbeLink products are sold subject to its published Terms and Conditions, subject to any separate terms agreed with its customers. No warranty of any type is extended by publication of this documentation, including, but not limited to, implied warranties of merchantability, fitness for a particular purpose and non-infringement.

NimbeLink is a registered trademark, and Skywire is a registered trademark, of NimbeLink Corp. All trademarks, service marks and similar designations referenced in this document are the property of their respective owners.

Table of Contents

NimbeLink Part Numbers Affected	3
Applications Affected	3
How to Identify Affected Product	5
Workarounds	6
Contact	7

This document identifies known exceptions to the functional specifications for the NL-AB-RPI adapter board product and may include notes on conditions impacting the performance outside of normal ranges. Conditions documented here may or may not be addressed in future revisions of the product or the product documentation.

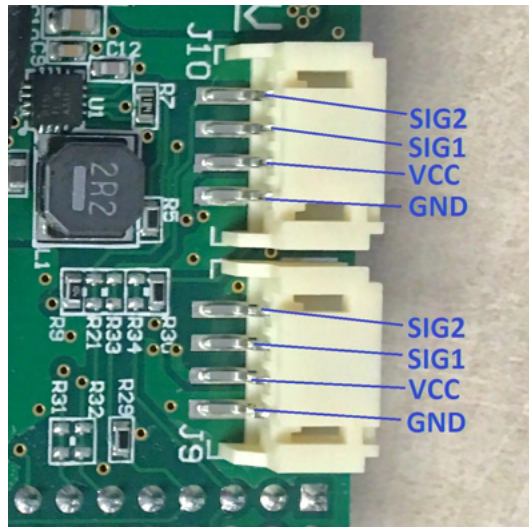
© Copyright 2017, Nimbelink Corp. All Rights Reserved.

1. NimbeLink Part Numbers Affected

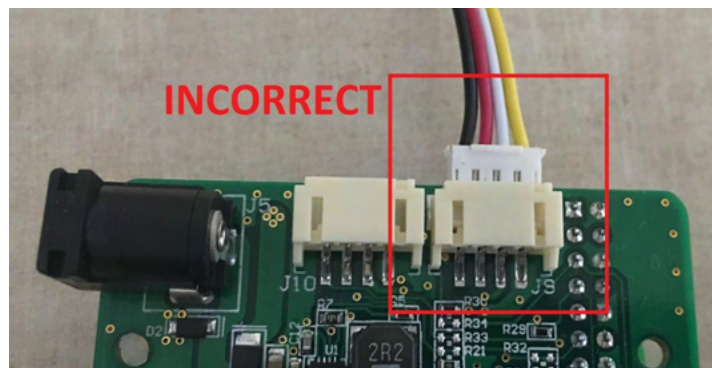
Affected Part Numbers	Affected PCB Numbers
NL-AB-RPI	1001430 Rev A

2. Applications Affected

Applications using the Grove connectors on NL-AB-RPI adapter board with PCB revision 1001430 REV A are affected. The grove connector pins are reversed, as shown in the image below. Users who wish to use Grove sensors on affected PCBs must follow the steps outlined in section four of this errata.

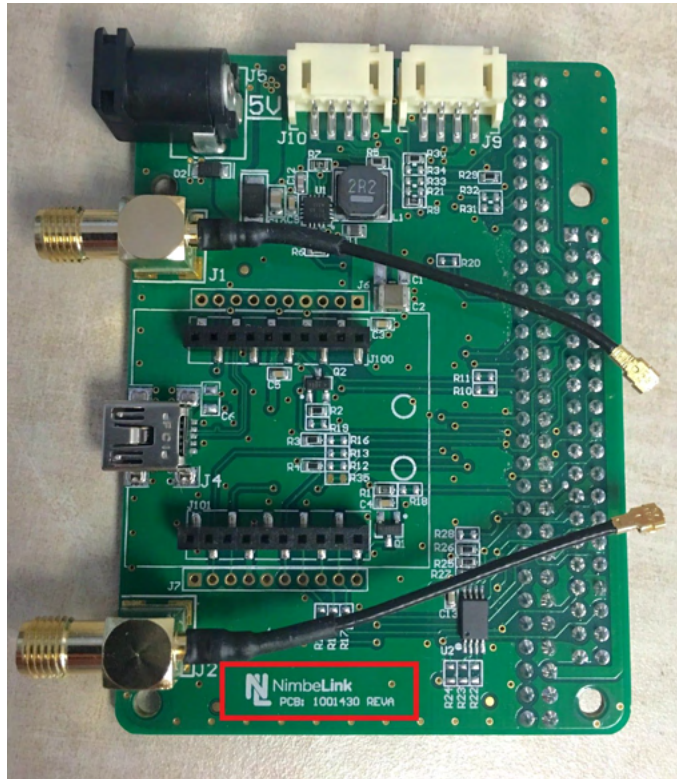


Grove sensors using unmodified cables should not be directly attached to the Grove connectors on affected boards as this may cause shorts and/or damage to the sensor or Raspberry Pi.



3. How to Identify Affected Product

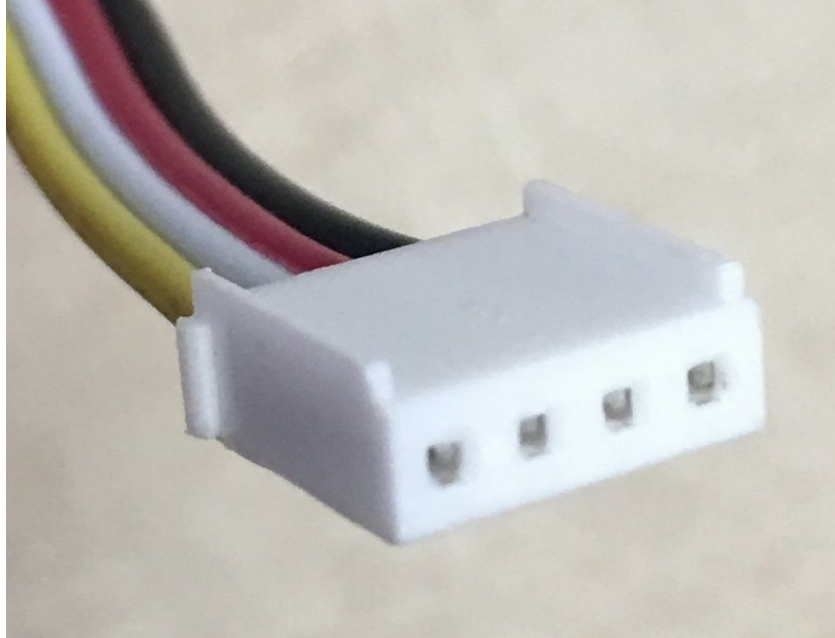
The PCB revision number is located on the bottom of the top side of the PCB. This Errata affects all NL-AB-RPI boards with a PCB revision number of 1001430 Rev A.



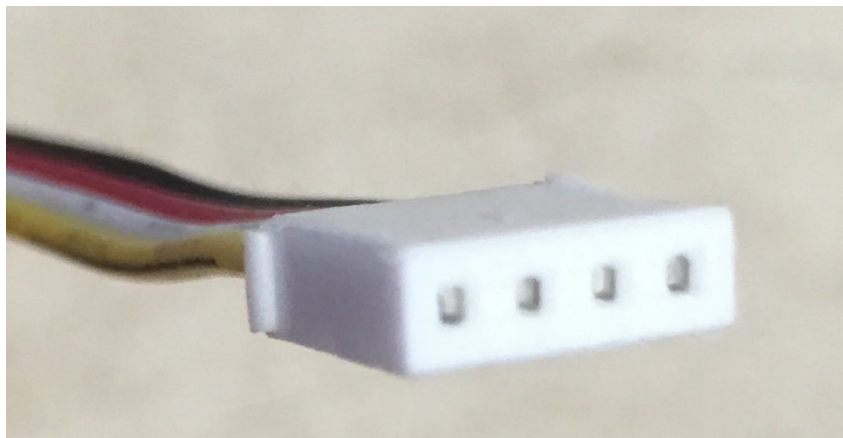
4. Workarounds

The suggested workaround is to modify the Grove sensor cable connector to allow it to be plugged into the adapter upside down. Users will need to remove the polarity tabs from the Grove connector on the cable. To remove the tabs follow these steps:

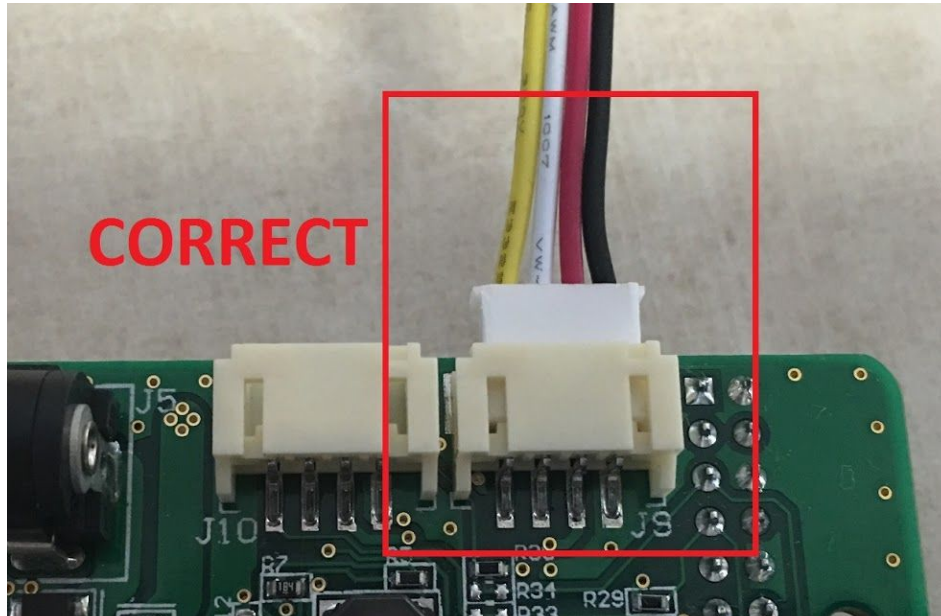
1. Identify the side of the cable that will be modified.



2. Use a razor blade to remove the two tabs.



- Once the tabs have been removed the connector can now be inserted into the NL-AB-RPI adapter upside down. The cable should be oriented so that the ground wire (black wire) is on the left side of the J9 or J10 connector on the NL-AB-RPI.



5. Contact

For further information please contact Nimbelink Technical Support at Product.Support@NimbeLink.com.

Revision History

REV	EDITOR	DESCRIPTION	APPROVAL	DATE
A	GJN	Initial draft		2017/07/17